

# Monofacial

# G1 SERIES

## Monocrystalline Silicon PV Modules 180-200 Watt



Positive Tolerance 0~+5W



Enhanced Product Warranty  
on Materials and Workmanship



Linear Power Performance Warranty

## KEY FEATURES



### MULTI BUSBAR TECHNOLOGY

Better light trapping and current collection to improve power and reliability.



### REDUCED HOT SPOT LOSS

Optimized electrical design and lower operating current for reduced hot spot loss and better temperature coefficient.



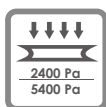
### PID RESISTANCE

Excellent Anti-PID performance guarantee via production and materials control.



### RELIABLE PERFORMANCE

Durability against salt mist and ammonia environmental conditions.

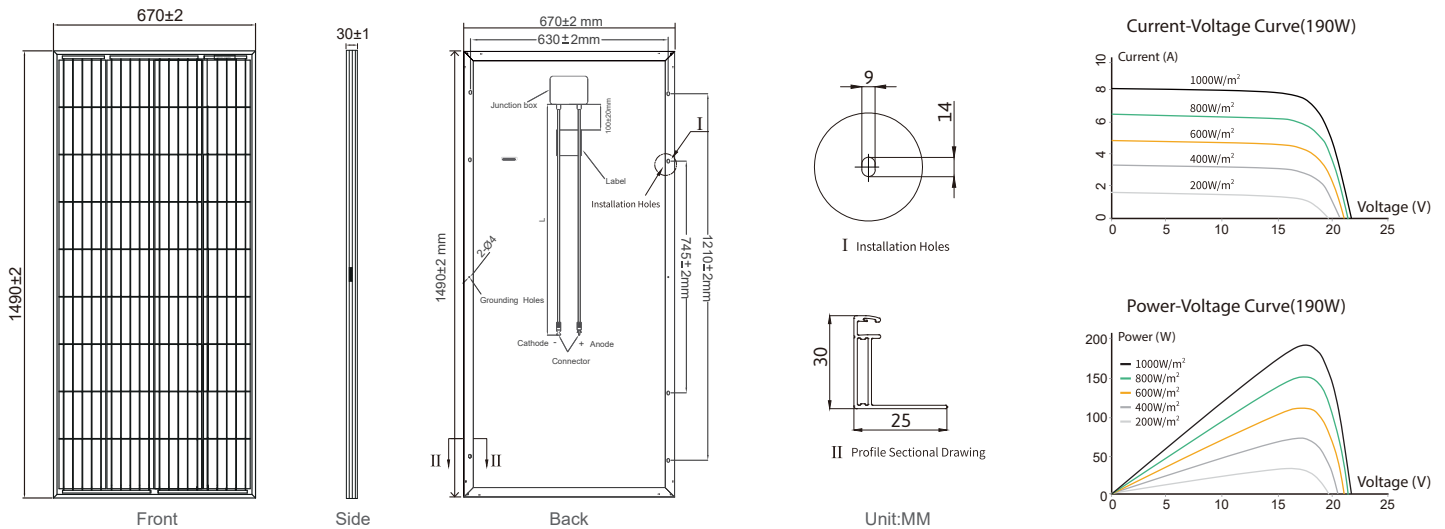


### STABLE MECHANICAL PERFORMANCE

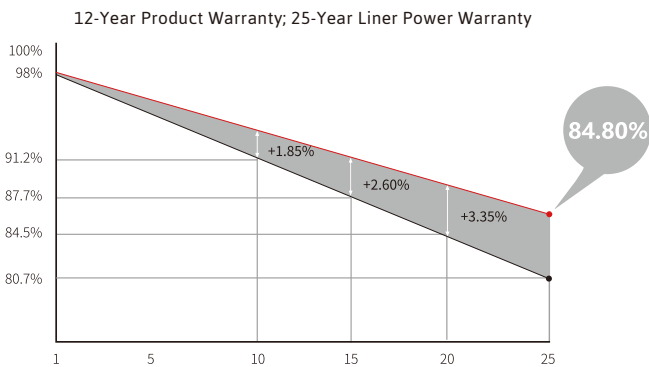
Withstands 5400Pa snow loads and 2400Pa wind loads.



# Monocrystalline Silicon PV Modules 180-200W



## Additional Value



## Mechanical Parameters

Cell Type	Mono PERC 158.75×158.75mm
Cell Orientation	36 Cells (4×9)
Junction Box	Protection class IP68
Output Cable	TÜV 1×4.0mm <sup>2</sup> , Length 900mm; wire length can be customized
Glass	3.2mm coated tempered glass
Frame	Anodized aluminum alloy frame
Weight	11.5kg
Dimension	1490×670×30mm
Packaging	35pcs per pallet / 1320pcs per 40'HQ

## Electrical Characteristics

Module Type	DC180M-36		DC185M-36		DC190M-36		DC195M-36		DC200M-36	
	STC	NOCT	STC	NOCT	STC	NOCT	STC	NOCT	STC	NOCT
Testing Condition	STC	NOCT	STC	NOCT	STC	NOCT	STC	NOCT	STC	NOCT
Maximum Power (Pmax/W)	180	133	185	137	190	141	195	145	200	149
Voltage at Max. Power (Vmp/V)	18.8	18.5	19.0	18.7	19.2	18.9	19.4	19.1	19.6	19.3
Current at Max. Power (Imp/A)	9.58	7.19	9.74	7.32	9.90	7.46	10.05	7.60	10.21	7.72
Open Circuit Voltage (Voc/V)	22.8	22.3	23.0	22.5	23.2	22.7	23.4	22.9	23.6	23.1
Short Circuit Current (Isc/A)	10.32	7.88	10.51	8.01	10.70	8.17	10.88	8.33	11.03	8.49
Module Efficiency (%)	18.03		18.53		19.03		19.53		20.03	

STC (Standard Testing Conditions): Irradiance 1000W/m<sup>2</sup>, Cell Temperature 25°C, AM1.5.

NOCT (Nominal Operating Cell Temperature): Irradiance 800W/m<sup>2</sup>, Ambient Temperature 20°C, AM1.5, Wind Speed 1m/s.

## Operating Parameters

Operating Temperature	-40°C ~ +85°C
Power Output Tolerance	0 ~ +5W
Voc and Isc Tolerance	±3%
Maximum System Voltage	1000/1500V
Maximum Series Fuse Rating	15A
NOCT (Nominal Operating Cell Temperature)	45±2°C
Protection Class	Class II
Fire Rating	UL type 1 or 2

## Mechanical Loading

Front Side Maximum Static Loading	5400Pa
Rear Side Maximum Static Loading	2400Pa
Hailstone Test	25mm Hailstone at the speed of 23m/s

## Temperature Ratings(STC)

Temperature Coefficient (Pm)	-0.370% / °C
Temperature Coefficient (Voc)	-0.280% / °C
Temperature Coefficient (Isc)	0.048% / °C



Sunway New Energy

www.sunwaysolution.com

Email: mark@sunwaysolution.com

Due to continuous innovation, R & D and product improvement, Sunway has the right to adjust the specs on this datasheet at any time without prior notice.